

**ATTENDANCE BOUNDARY DEVELOPMENT
FOR
COPPERGATE ELEMENTARY SCHOOL
AND ATTENDANCE BOUNDARY REVISIONS
TO
DOCTORS INLET ELEMENTARY, KEYSTONE
ELEMENTARY, LAKE ASBURY
ELEMENTARY, LAKESIDE ELEMENTARY,
MCRAE ELEMENTARY, RIDEOUT
ELEMENTARY, RIDGEVIEW ELEMENTARY
AND TYNES ELEMENTARY SCHOOLS**



October 19, 2006

**Superintendent of Schools
David L. Owens**

**TABLE OF CONTENTS
FOR
COPPERGATE ELEMENTARY SCHOOL
AND
EXISTING AFFECTED SCHOOLS**

	<u>PAGE #</u>
I. PREFACE	1
II. REDISTRICTING PROCESS	2-3
III. TIMELINE FOR REDISTRICTING	4
IV. CONSIDERATIONS / CRITERIA FOR REDISTRICTING	5
V. SCHOOL ENROLLMENT, CAPACITY AND PROJECTIONS	6
VI. POPULATION REGION MAPS	7-8
VII. EXISTING ATTENDANCE BOUNDARY MAP	9
VIII. PROPOSED ATTENDANCE BOUNDARY MAPS	10-11
IX. RECOMMENDED ATTENDANCE BOUNDARY ADVERTISEMENT	12

PREFACE

The development of an attendance boundary is based on a process using criteria, fact and forecast.

The fundamental objective of redistricting is to afford every child an equal opportunity of access to facilities, educational programs and to maintain each school in a sound fiscal status.

Redistricting is considered when one of the following factors requires its implementation; a) new school; b) to balance student populations at existing schools due to growth; c) to balance student population at existing schools due to decreasing enrollment; and d) reorganization of grades.

REDISTRICTING PROCESS

STEP 1: Staff analyzes existing attendance boundaries. This analysis is to include, but not necessarily limited to, the following criteria: Historic enrollment trends, projected enrollment trends, school size and capacity, specific area population demographics, proximity, neighborhood concept, school bus transportation, walking distance, safety, stability and equity of distribution.

STEP 2: From data developed in the Step 1 analysis, options are to be developed. These options are to be unranked and are to represent the best alternatives in meeting the criteria of Step 1.

STEP 3: A meeting is scheduled to include the Assistant Superintendent of Support Services, Director of Facility Planning and Construction, the Coordinator of Planning and Intergovernmental Relations, the Director of Transportation, the appropriate Director of Elementary or Secondary Education, the Director of Exceptional Education (as necessary) and each affected School Principal. The purpose of the meeting is to rank the alternatives.

STEP 4: The Assistant Superintendent of Support Services will agenda the ranked redistricting alternatives during a Superintendent's staff meeting for general staff questions and discussions. The purpose is to encourage staff input to the Superintendent in order for the Superintendent to formulate his/her recommendation. Once the Superintendent's recommendation is formulated, the recommendation will be posted in each affected school. The Coordinator of Planning and Intergovernmental Relations will correspond with each affected school's School Advisory Committee for input, identification of timelines and process.

STEP 5: The Superintendent presents his/her recommendation to the School Board at an advertised School Board meeting. The Superintendent will request authorization to advertise the recommended school attendance boundaries in a local newspaper of general circulation. The advertisement will be for three (3) consecutive weeks. The recommendation will continue to be posted in each affected school and placed in the school newsletter if at all possible. The public will be allowed to address the recommendation if requested.

STEP 6: The Superintendent, after having advertised his/her recommendation, and after due consideration of additional input from staff and/or citizens, will agenda at the next School Board meeting approval of the original recommendation or revised recommendation for school attendance boundaries. A Public Hearing will be conducted by the School Board to seek public input at the meeting. Upon concluding the Public Hearing, the Superintendent's recommendation will be opened for discussion by the Board and ultimately acted upon either as the Superintendent's original or revised recommendation, as revised by the Board or tabled to a time certain for additional time of consideration.

STEP 7: Upon the School Board acting upon a new or revised school attendance boundary, the District's Facility Planning and Construction Department will update and post new or revised attendance boundary descriptions and maps, communicate same to each affected school, communicate same to the Board of Realtors and to any large development within the attendance boundary being affected.

**TIMELINE FOR REDISTRICTING
FOR
COPPERGATE ELEMENTARY SCHOOL
AND
EXISTING AFFECTED SCHOOLS**

September, 2006	STEP 1:	Background Data Developed
	STEP 2:	Options Developed
October 11, 2006	STEP 3:	Staff and School Principals Meet to Review the Recommendation
October 11, 2006	STEP 4:	Finalize Recommendation
October 19, 2006	STEP 5:	Present Recommendation to School Board
		Request Authorization to Advertise
		Advertisements and Communications Processed
November 21, 2006	STEP 6:	School Board Public Hearing is Conducted
		Board Discussion and Approval of Attendance Boundaries
November/December, 2006	STEP 7:	Attendance Boundary Map Updates Provided
		Communications Processed

CONSIDERATIONS/CRITERIA FOR REDISTRICTING

- SAFETY
- ANALYSIS OF EXISTING ATTENDANCE BOUNDARIES
- SCHOOL CAPACITY AND LEVEL OF SERVICE
- GEOGRAPHIC AREA CHARACTERISTICS (MATURE VS. GROWING)
- PROJECTED ENROLLMENT TRENDS
- SCHOOL BOARD FACILITY LIST
- SHORT RANGE AND LONG RANGE ENROLLMENT FORECASTS
- NEIGHBORHOOD CONCEPT
- PROXIMITY FOR STUDENT ATTENDANCE (IF NOT NEIGHBORHOOD, THEN AS CLOSE AS POSSIBLE)
- MINIMUM SIZE OF SCHOOL
- BALANCED STUDENT DISTRIBUTION
- TRANSPORTATION
 - WALKING DISTANCE/PATHS
 - PARENT/STUDENT PERSONAL TRANSPORTATION
 - SCHOOL BUS TRANSPORTATION

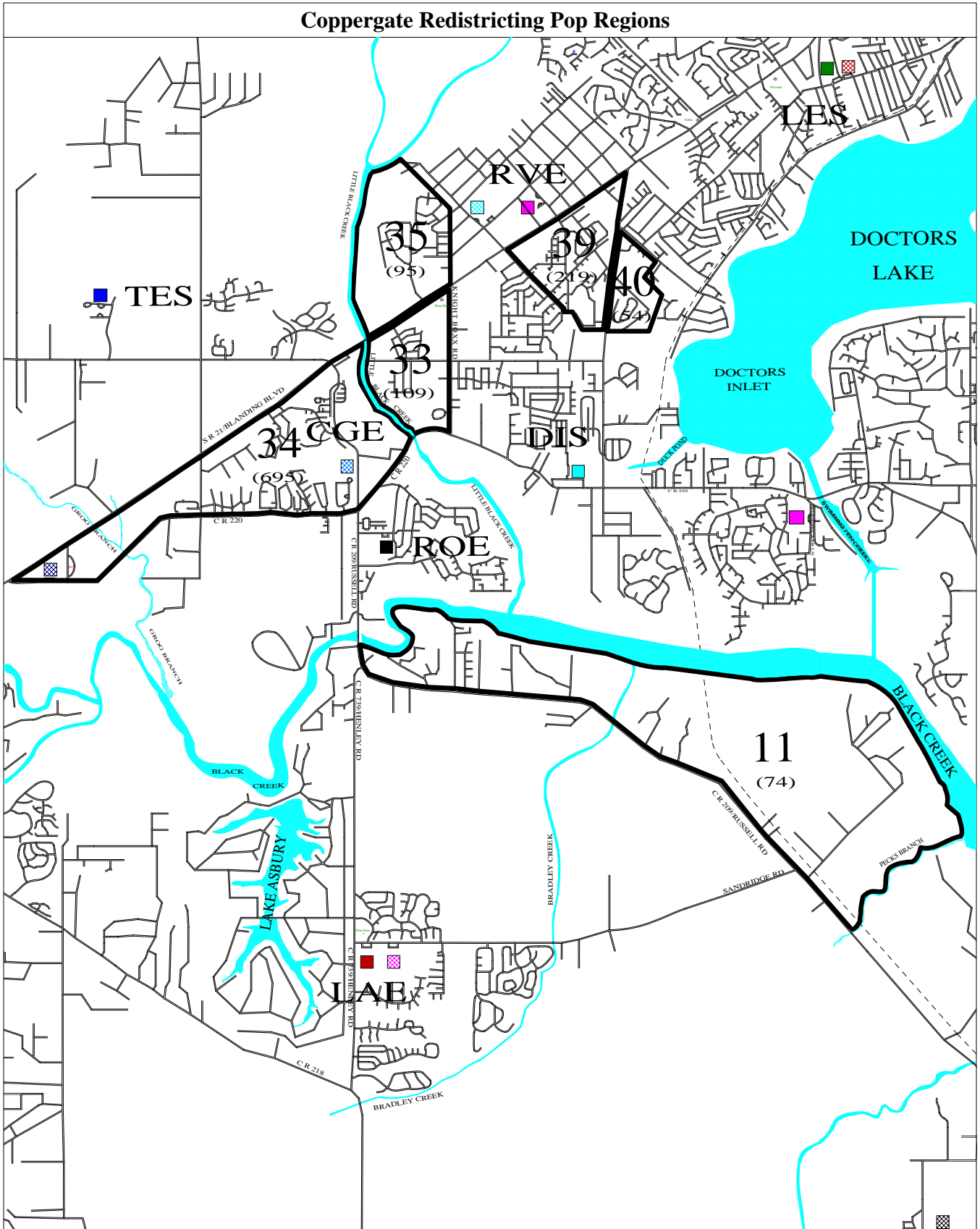
School Enrollment, Capacity and Projections

School Name/Code	Capacity	Current		Population Regions								2007-08		2012-13			
		Enroll.	LOS	11	33	34	35*	39	40	47	49	New Enroll.	LOS	Enroll.	LOS	Enroll.	LOS
Coppergate Elementary CGE	862	0	0%			695						695	81%	774	90%	855	99%
Rideout Elementary ROE	862	1,053	122%	74	109	(695)						541	63%	568	66%	735	85%
Tynes Elementary TES	862	776	90%		(109)		(95)					572	66%	603	70%	789	91%
Lake Asbury Elementary LAE	862	1,371	159%	(74)								1,297	150%	1,401	163%	943	109%
Ridgeview Elementary RVE	776	772	99%				95					867	112%	859	111%	821	106%
Lakeside Elementary LES	862	615	71%					219	54			888	103%	895	104%	932	108%
Doctor Inlet Elementary DIS	735	1,006	137%					(219)	(54)			733	100%	754	103%	867	118%
Keystone Heights Elementary KHE	773	817	106%							(71)	(24)	722	93%	732	95%	784	101%
McRae Elementary MRE	862	566	66%							71	24	661	77%	666	77%	693	80%

* If this initiative is approved, ESE program(s) must be removed from RVE to reduce the LOS.

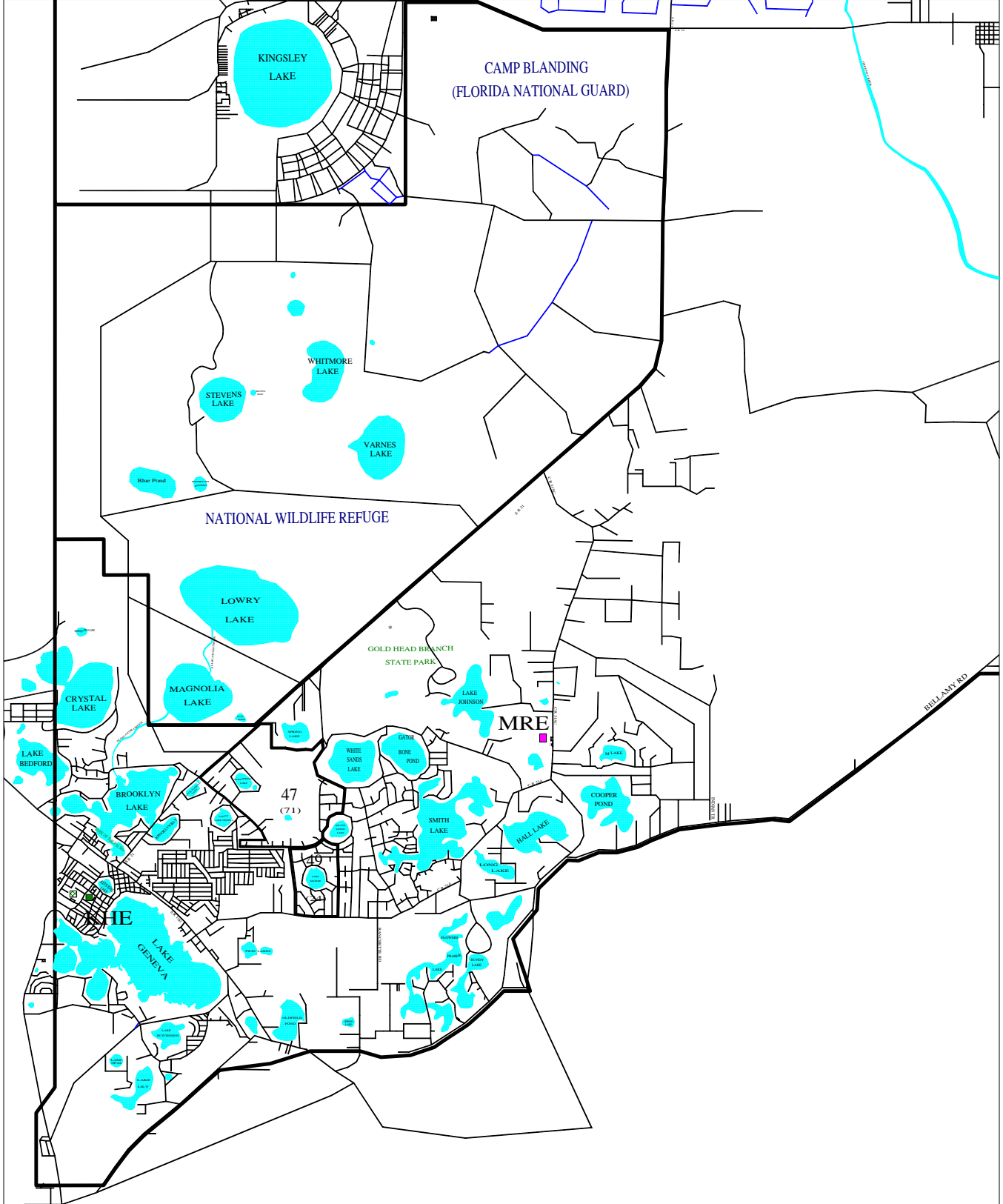
- Capacity is the adopted school capacity as defined in the adopted Educational Facilities Plan, FY 2006/07.
- Current Enrollment figures are based on the 1st month's membership report for 2006/07 school year.
- LOS is the level of service derived by dividing the enrollment by capacity for each school. The District's desired adopted LOS is 100%.
- General Description of Population Regions (PR):
 - PR 11 - North and East of CR 209; North of Peters Creek; South of Black Creek
 - PR 33 - South of SR 21; East of Little Black Creek; West of Knight Boxx Rd.
 - PR 34 - North of CR 220; South of SR 21; West of Little Black Creek
 - PR 35 - Bear Run Area (East and South of Little Black Creek; North of SR 21; West of Madison Ave.)
 - PR 39 - North Tanglewood Area (South of SR 21; West of College Dr.; East of Tanglewood; and North of Mosely Rd.)
 - PR 40 - East of College Dr; South of Peoria Rd.; North of Peoria Cemetery Rd.)
 - PR 47 - South of SR 21; East of Gas Line Rd.; North of Oak Leaf Rd.; West of Spring Lake Rd. South
 - PR 49 - South of Oak Leaf Rd.; East of Casa Granda Blvd.; North of CR 214; West of Silver Sands Lake Rd.

Coppergate Redistricting Pop Regions

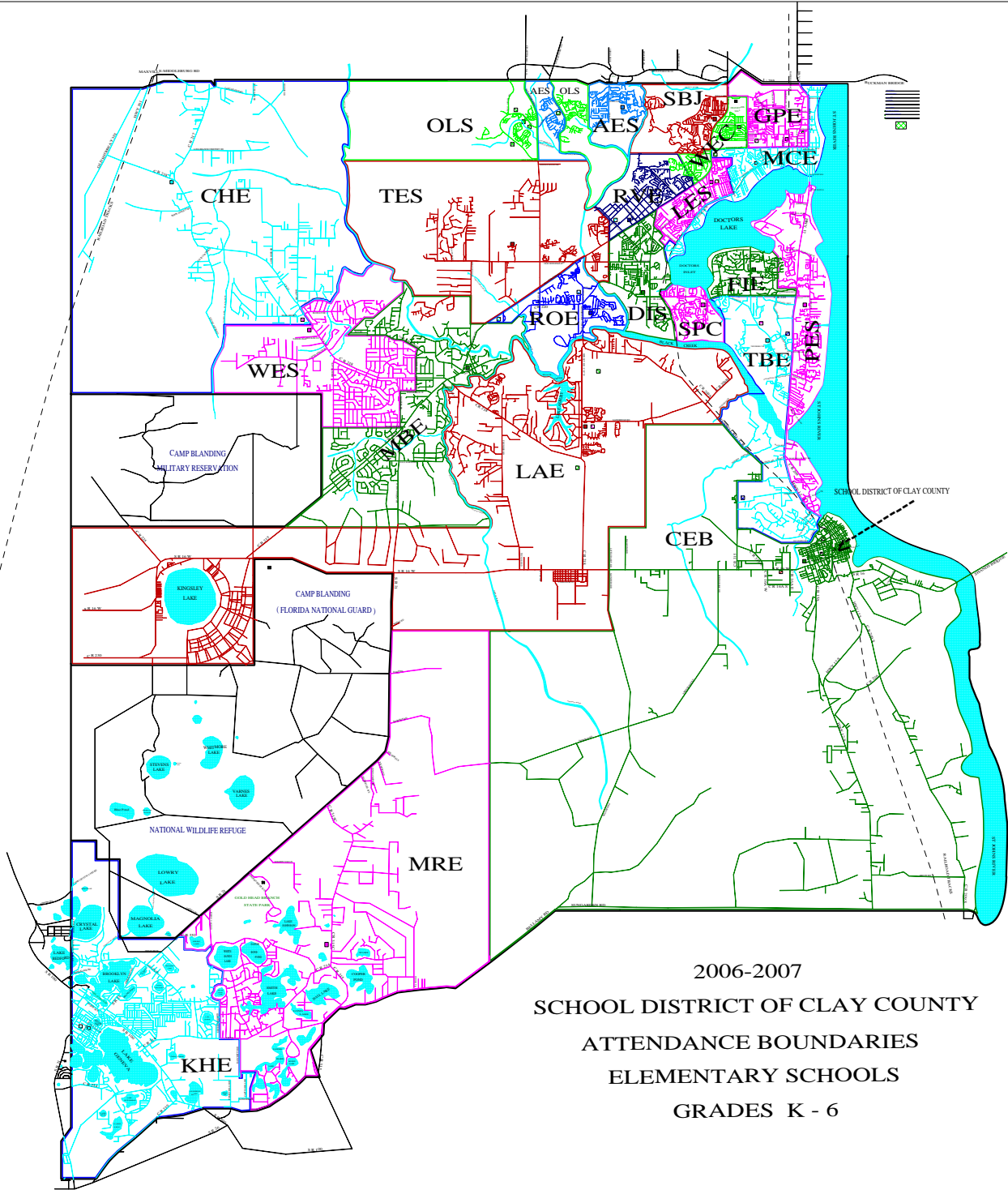


SCALE: 1.11 mi/inch.

Keystone Heights Redistricting Pop Regions



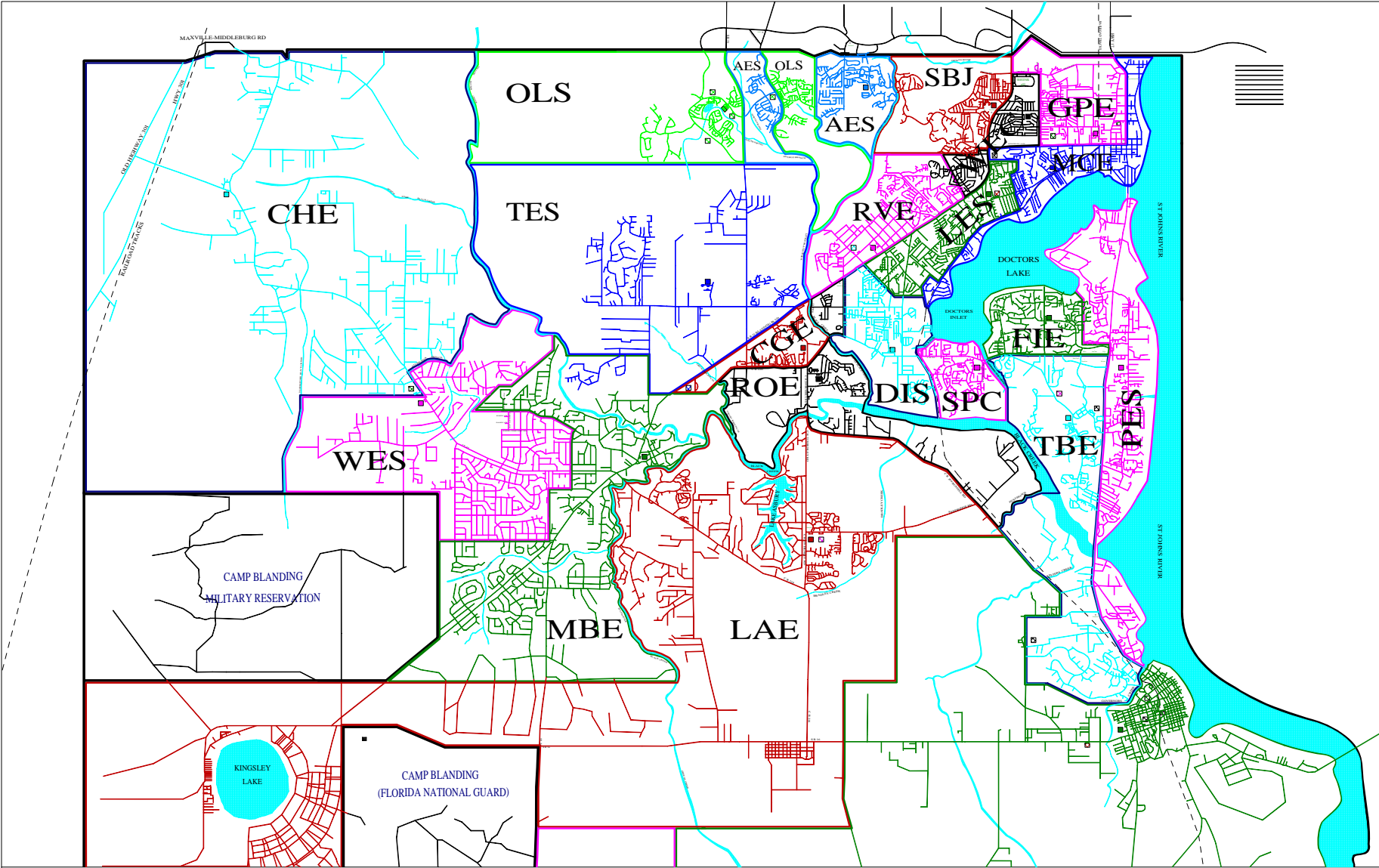
SCALE: 2.16 mi/inch.



2006-2007
 SCHOOL DISTRICT OF CLAY COUNTY
 ATTENDANCE BOUNDARIES
 ELEMENTARY SCHOOLS
 GRADES K - 6

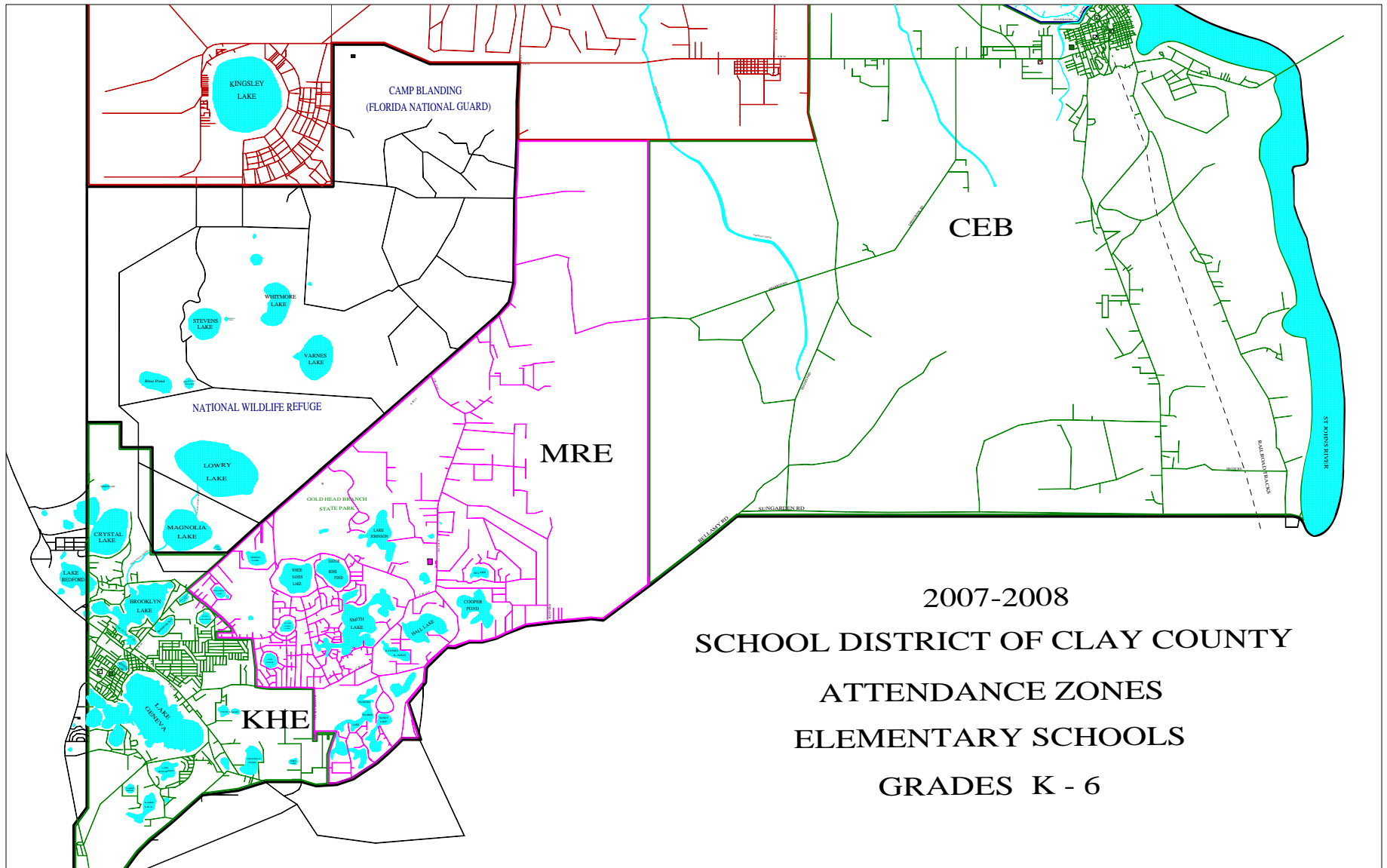
Attendance Boundaries Are Subject To Change Due To Varying Student Population Within Each Boundary. This Map Does Not Reflect Any Exclusions Approved By The School District of Clay County.

SCALE: 4.52 mi/inch.



Attendance Zones are subject to change due to varying student population within each zone. This map does not reflect any exclusions approved by the School District of Clay County.

SCALE: 2.98 mi/inch.



2007-2008
 SCHOOL DISTRICT OF CLAY COUNTY
 ATTENDANCE ZONES
 ELEMENTARY SCHOOLS
 GRADES K - 6

Attendance Zones are subject to change due to varying student population within each zone. This map does not reflect any exclusions approved by the School District of Clay County.

SCALE: 3.13 mi/inch.

**RECOMMENDED ATTENDANCE BOUNDARY
ADVERTISEMENT**

ADVERTISEMENTS IN: CLAY COUNTY LEADER
CLAY TODAY
FLORIDA TIMES UNION (COUNTY LINE)

**REDISTRICTING FOR COPPERGATE ELEMENTARY AND
REVISIONS OF ATTENDANCE BOUNDARIES FOR DOCTORS
ELEMENTARY, KEYSTONE ELEMENTARY, LAKE ASBURY
ELEMENTARY, LAKESIDE ELEMENTARY, MCRAE ELEMENTARY,
RIDEOUT ELEMENTARY, RIDGEVIEW ELEMENTARY AND TYNES
ELEMENTARY SCHOOLS**

The School Board of Clay County is considering establishing a new attendance boundary for Coppergate Elementary scheduled to open August, 2007, and revisions or modifications to attendance boundaries of Doctors Inlet Elementary, Keystone Elementary, Lake Asbury Elementary, Lakeside Elementary, McRae Elementary, RideOut Elementary, Ridgeview Elementary and Tynes Elementary Schools to be effective at the start of school year 2007/08. A public hearing will be scheduled on this topic on November 21, 2006 at 7:00 p.m. in the Teacher In-Service Center at Fleming Island High School, 2233 Village Square Parkway, Orange Park, Florida.

For additional information, please contact Shawanda Watson, Department of Facility Planning and Construction, 284-6516 or 272-8100, ext 6516.